

No	L	CABLE
DW-F5E-0025-GR	250 ± 40mm	CAT. 5E/FTP 26AWG, GREY
DW-F5E-005-GR	500 ± 40mm	CAT. 5E/FTP 26AWG, GREY
DW-F5E-010-GR	1000 ± 40mm	CAT. 5E/FTP 26AWG, GREY
DW-F5E-020-GR	2000 ± 40mm	CAT. 5E/FTP 26AWG, GREY
DW-F5E-030-GR	3000 ± 40mm	CAT. 5E/FTP 26AWG, GREY
DW-F5E-050-GR	5000 ± 100mm	CAT. 5E/FTP 26AWG, GREY
DW-F5E-070-GR	7000 ± 100mm	CAT. 5E/FTP 26AWG, GREY
DW-F5E-100-GR	10000 ± 100mm	CAT. 5E/FTP 26AWG, GREY

NOTES:

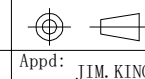
1. ELECTRICAL TEST: 100% OPEN, SHORT & MISS WIRE TEST.
2. CONDUCTOR RESISTANCE: 10 OHMS MAX.
3. INSULATOR RESISTANCE: 5M OHMS MIN, DC 300V 0.01sec.
4. HI-POT: DC 300V 0.1sec.

NO	PART NAME	DESCRIPTION	QTY
3	Cable	CAT. 5E/FTP CABLE 26AWG (7/0.16)*4P+AL+D (7/0.12BS) JACKET: PVC, GREY; OD: 5.5 ± 0.2mm	1
2	Molding	45P PVC OUTER MOLDING HOUSING, COLOR: GREY	2
1	Connector	RJ45 MALE CONNECTOR (SHIELD), PIN GOLD PLATED 3U".	2

-TOLERANCES-
UNLESS OTHERWISE
SPECIFIED



UNLESS OTHERWISE SPECIFIED
TOLERANCES FOR MILLIMETERS ARE:
0.5 - 8mm ± 0.20mm
8 - 30mm ± 0.25mm
30 - 120mm ± 0.30mm



PART DESCRIPTION:
Patch Cable CAT5E FTP PVC 7m Gray Non-Snag-Proof
P/N: DW-F5E-070-GR

Check:	Date	Scale	Unit	Type	Page
Draw: Gavin	2022.11.30	Free	MM	Z	1/1